

Tips & Tricks

A step by step guide to boost your BI skills

• TIP 1

SAP BW 'Info Areas' Tree in Database Panel

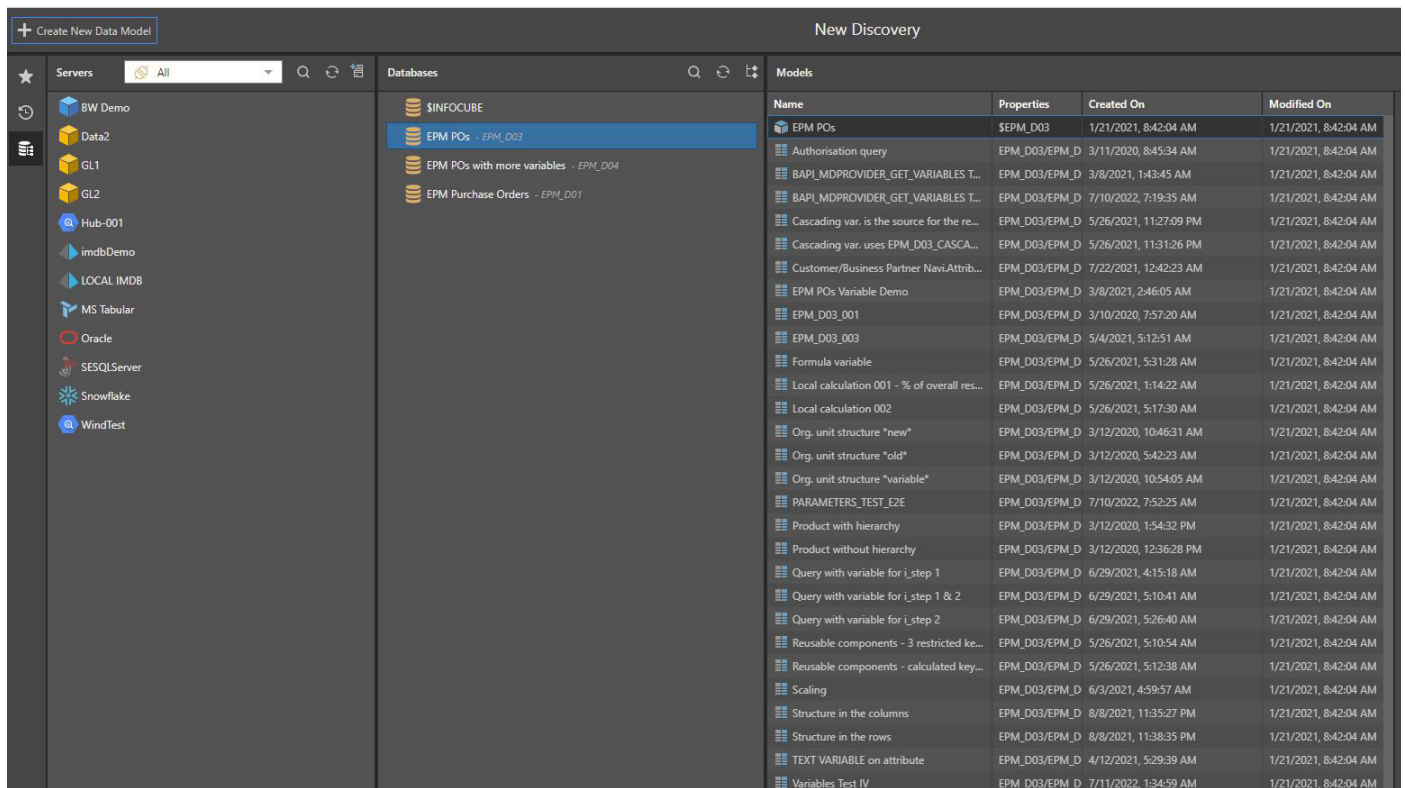
• TIP 2

Creating a Switch List

TIP 1

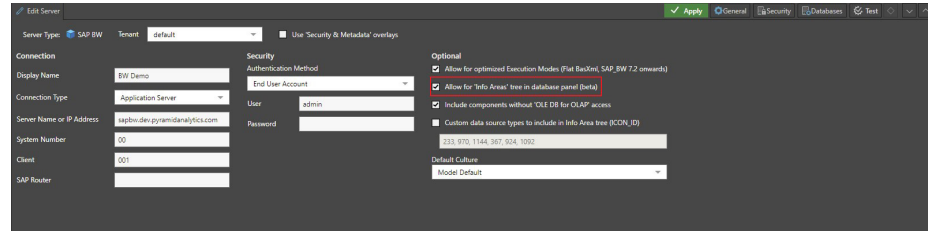
SAP BW 'Info Areas' Tree in Database Panel

Pyramid supports direct query connections to SAP BW. However finding the BW query to use as a source for Pyramid discover can take time with hundreds of queries returned in a static list for each BW cube.



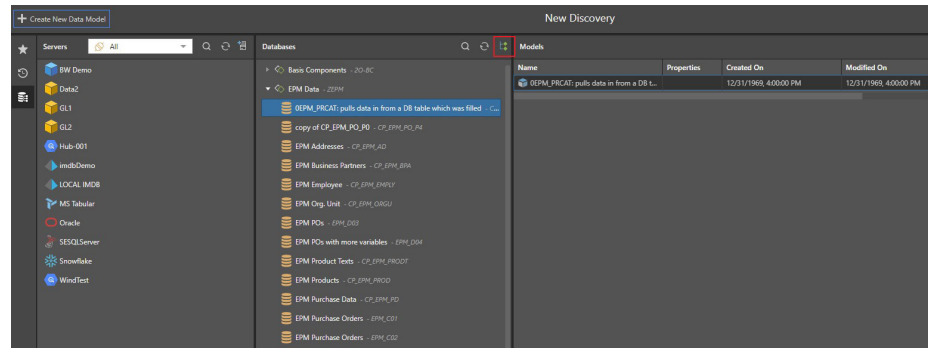
1 To simplify the query selection process, tick the optional feature on the database source 'Allow for 'Info Areas' tree in database panel.

Admin Console > Data > Data Source > Pick SAP BW Source > Edit



This additional configuration option runs the additional SAP BAPI (Business Application Programming Interface) RSZ_X_INFOCUBES_GET

2 With this option selected the BW queries are available in a tree view similar to how they are present in SAP BW.



TIP 2

Creating a Switch List

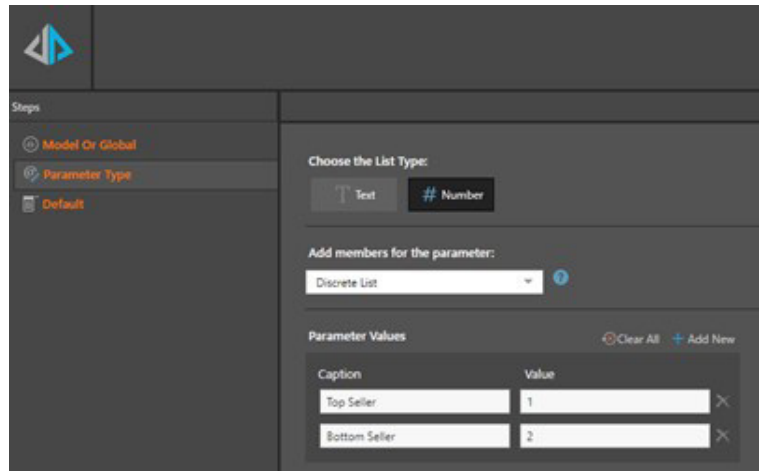
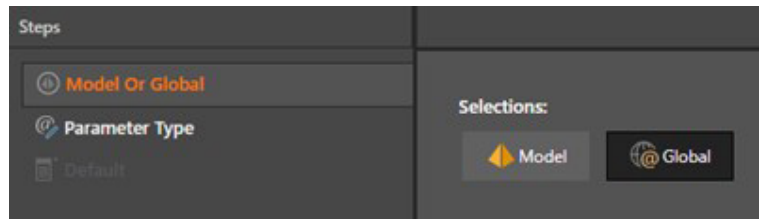
In the following scenario we are going to create a Discover report which uses a switch list to display the top and bottom products sold. This is useful when you want to use custom lists when filtering your report. Create a global parameter to act as a toggle button to switch between the top and bottom selling products.

- 1 Create a global parameter to act as a toggle button to switch between the Top and Bottom selling products.

Select Formulate and create a global parameter.

Select # Number and Discrete Lists, create 2 captions: Top Seller, value 1 | Bottom Seller, value 2.

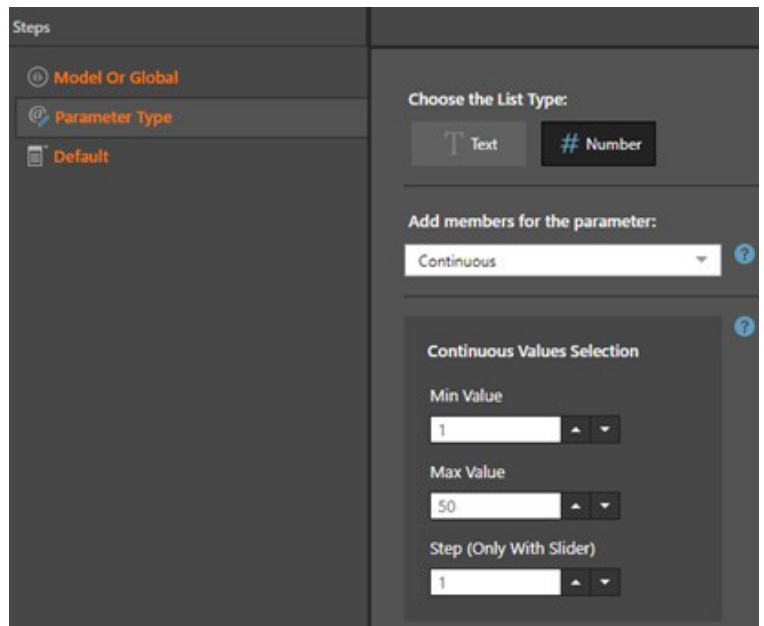
Save the Global Parameter – ‘Seller Options’.



- 2 Create a global parameter to control the number of products displayed in the Top and Bottom Seller views.

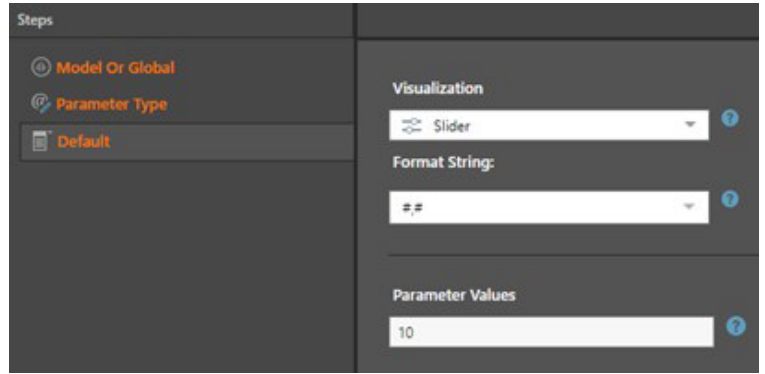
Select Formulate and create a global parameter.

Select # Number and Continuous with the following values: Min Value = 1 | Max Value = 50 | Step = 1



Default: Format String is #,# | Parameter Values = 10 | Step = 1

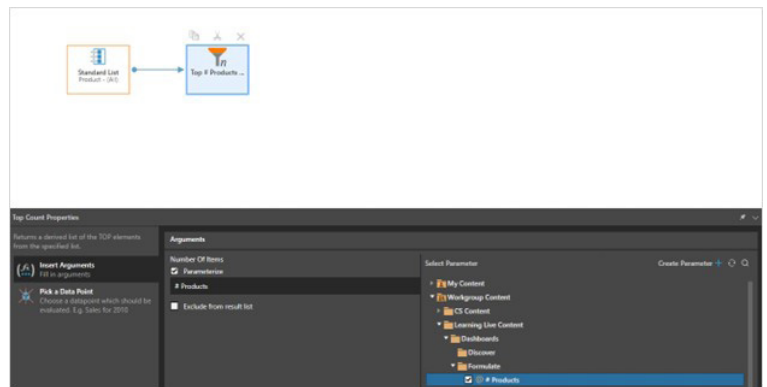
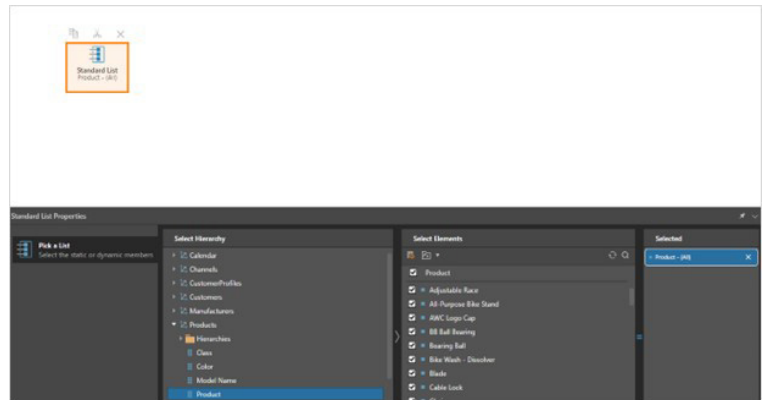
Save as '# Products'



3 Create Top and Bottom Selling product lists, based on the global parameter.

Select Formulate and create standard list.
Select the required data model.

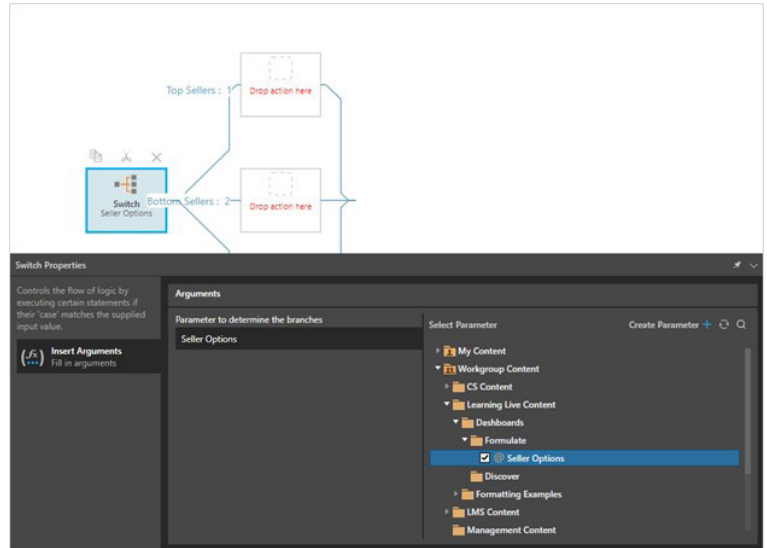
- Select the required attributes > 'Product' and select all elements.
- Add Filter block – Top Count to the canvas
- Insert Arguments
 - »Check 'Parameterize' and choose global parameter '# products'
- Pick a Data Point
- Select Measures and choose a measure > Sales
- Save List as 'Top n Sellers'
- Duplicate the 'Top n Sellers' list and rename as 'Bottom n Sellers'
- Edit the 'Bottom n Sellers' list
 - »Replace the Top Count filter block with a Bottom Count filter block
 - »Repeat the Insert Arguments and Pick a Data Point settings
- Save List as 'Bottom n Sellers'



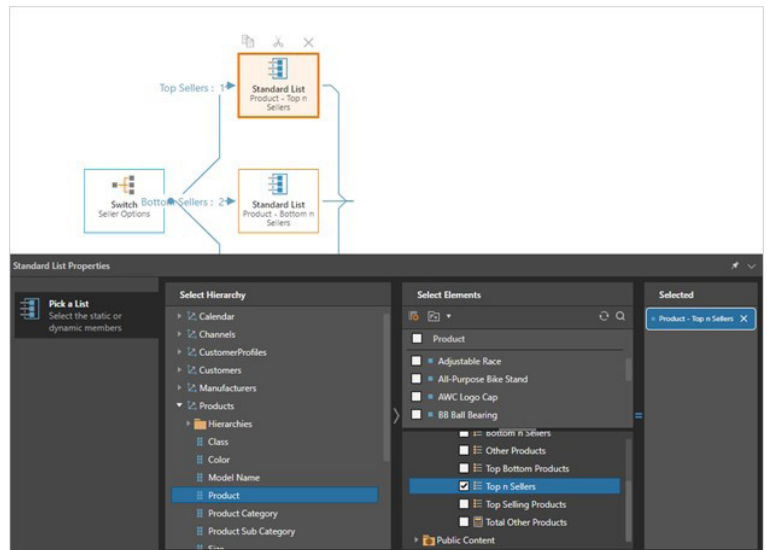
4 Create a switch list using the Top Selling Products and Bottom Selling Products lists.

Select Formulate and the required data model.

- Select 'Switch' block and place on the canvas
- Insert Arguments
 - »Select global parameter 'Seller Options'. This will control the number of switch branches.

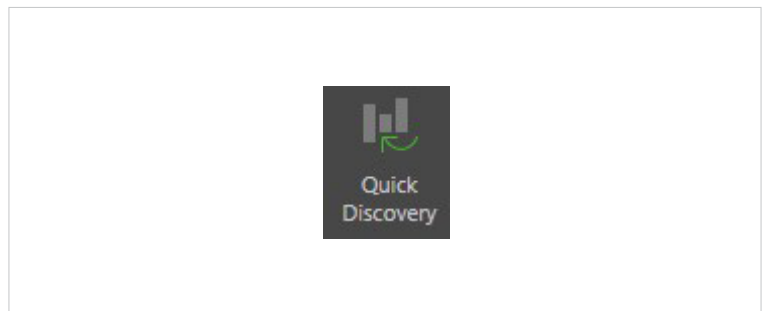


- In the Top Sellers branch add a Standard List and select 'Top n Sellers'
- In the Bottom Sellers branch add a Standard List and select 'Bottom n Sellers'
- In the Default branch add a Standard List and select 'Top n Sellers'

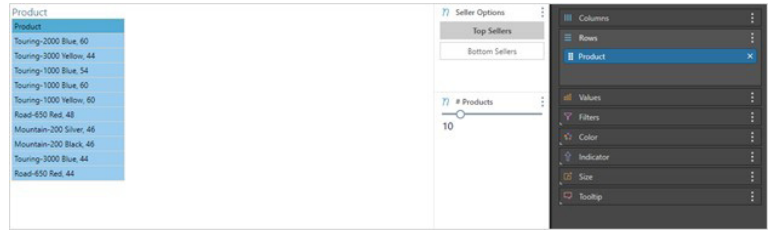


5 Create Discover using Switch List.

In the Switch Sellers Formulate view select Quick Discover.



This will create a new Discover and automatically add the Product attribute to the rows and select the 'Sellers Switch' list.



Add a measure to the columns, in this case 'Sales'.

Use the toggle button (Global Parameter) to change the grid view to show the Top n Sellers or the Bottom n Sellers. Use the # Products (Global Parameter) to control the number of products displayed.

