

# Tips & Tricks

## A step by step guide to boost your BI skills

• TIP 1

Interaction Picker

• TIP 2

Defining Swap/Add/Dice Dimensions in Presentation

• TIP 3

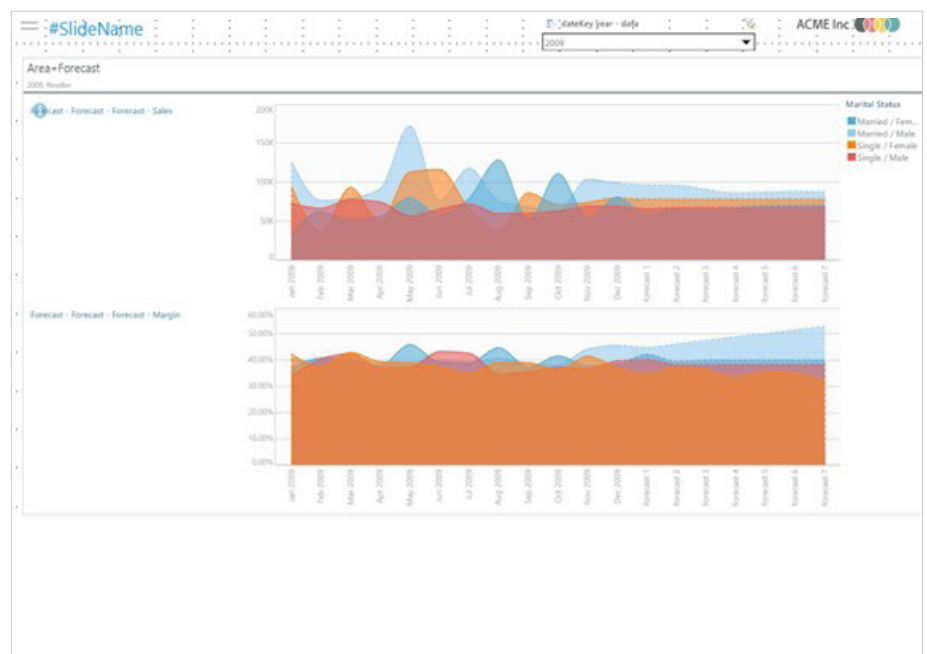
SAP BW Characteristics or Properties Usage

TIP 1

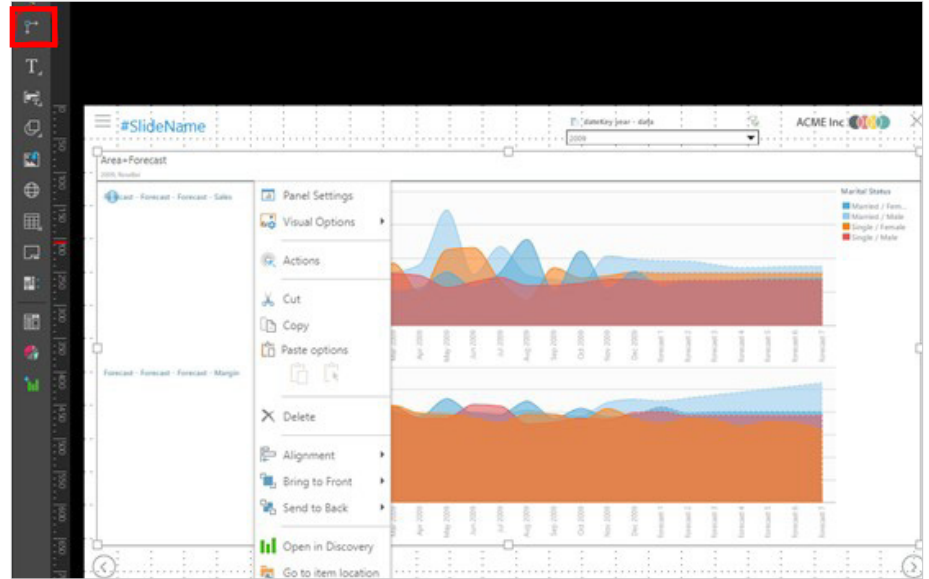
## Interaction Picker

The Interaction tool is a new mechanism for adding and reviewing interactions between content elements when designing a Present dashboard. This feature provides a new and intuitive way to add and edit interactions between content items in a Present dashboard. It also simplifies interaction management by providing a streamlined technique for limiting interaction arrows to those that are relevant for a given visual. It will allow an end-user to add interactions between visuals and slicers and to view interactions item by item.

1 Open a Presentation



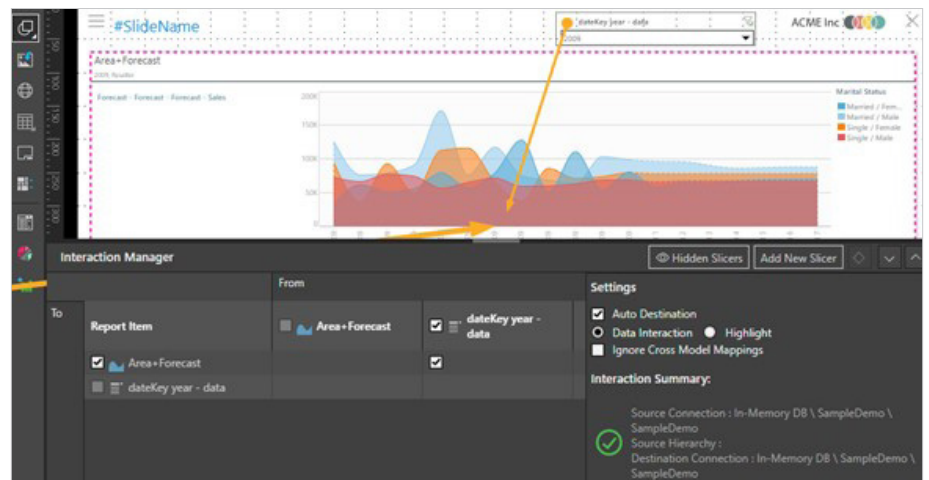
2 Click on the Interaction Picker



3 Click inside the panel to see the interactions that exist within the presentation. The interactions will be presented with arrows.

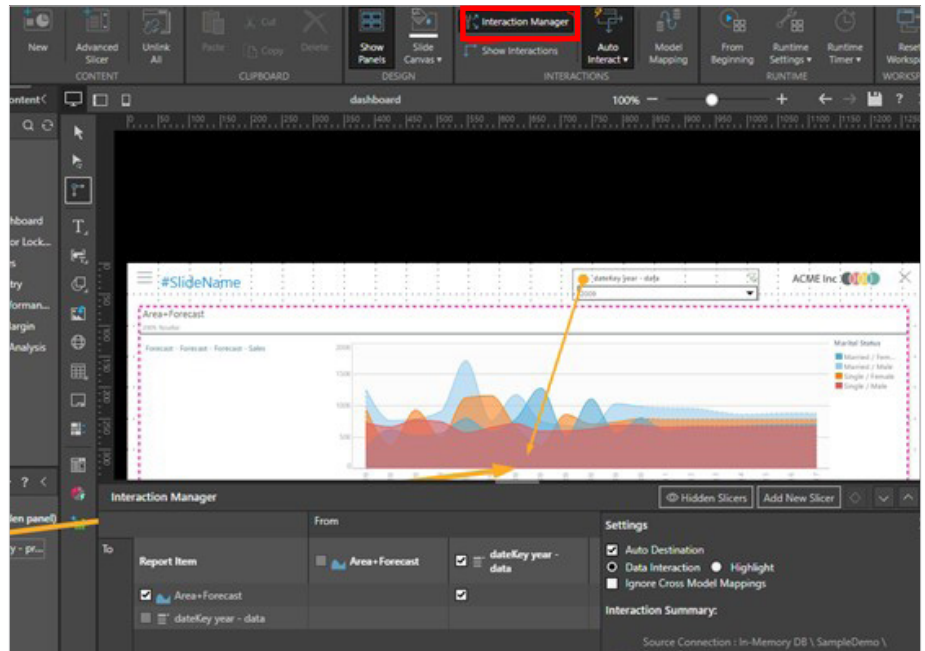


4 Right click on an arrow and click edit. This will take you to the interaction manager where you can add or remove actions.



There is also an Interaction Manager button that can be accessed from the ribbon.

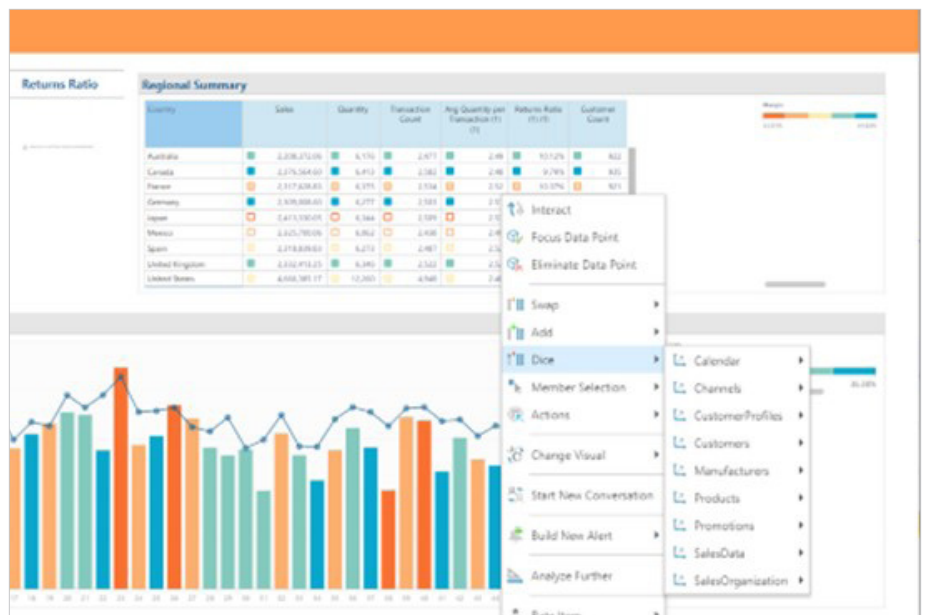
You can also show all of the interactions simultaneously by clicking the interactions button.



**TIP 2**

## Defining Swap/Add/Dice Dimensions in Presentation

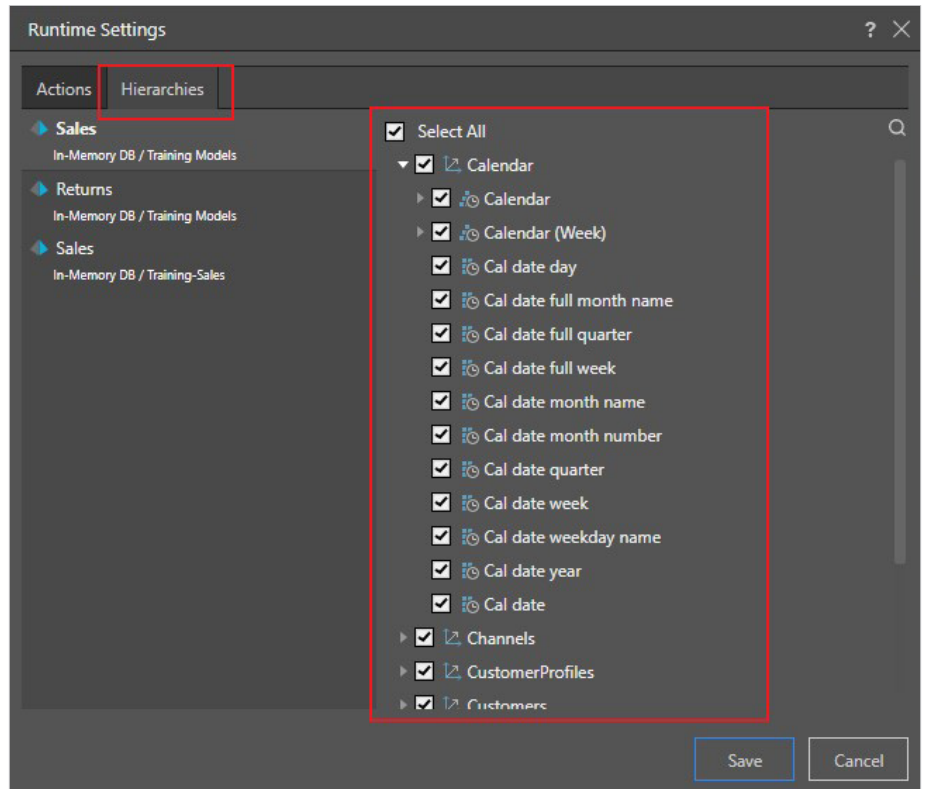
Within a presentation it is possible to Swap/Add/Dice by a dimension within a visual. By right clicking a dimension/member on the visual and selecting either Swap/Add/Dice, as illustrated below. By default, this shows all dimensions available in the data source, depending on the data source this could be over complicated for end users, fortunately in Pyramid there is a method to limit these options.



1 Within the presentation designer take a look at the main ribbon. Make sure you are on presentation tab as above and click the top half of the runtime settings button.



2 You are presented with the following window, from here select the Hierarchies tab. You are now able to select/deselect which hierarchies you wish users to interact with on the dashboard in the right click menu. Making it simpler for users to get straight to the information they need by swapping/adding/dicing only the most relevant information. Remember to click save once you have finished selecting your hierarchies.



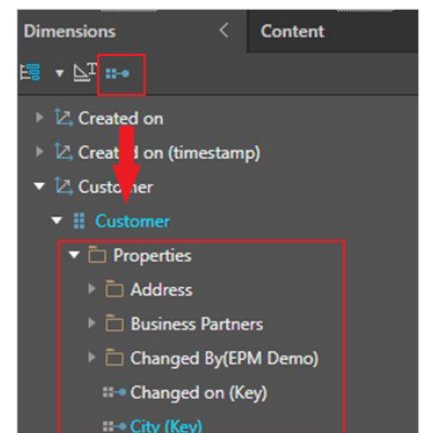
### TIP 3

## SAP BW Characteristics or Properties Usage

Selecting a dimensional attribute and adding it to a drop zone will effect the visual you are working on. If you are a SAP BW user then you can use your related dimensional characteristics (properties) to further your visual.

Selecting the show/hide properties button will make the visible to use.

*\*This is only unique to SAP data sources.*





When selected you can add your dimensional attribute and extra characteristics. Note, you must be using an attribute to make use of its characteristics.

Customer	Business Partners (Key)	City (Key)
SAP	2/100000046	Waldorf
Becker Berlin	2/100000047	Berlin
DelBont Industries	2/100000048	Wilmington, Delaware
Talpa	2/100000049	Hannover
Panorama Studios	2/100000050	Hollywood, California
TECUM	2/100000051	Münster
Asia High tech	2/100000052	Tokyo
Laurent	2/100000053	Paris
AVANTEL	2/100000054	Mexiko City
Telecomunicaciones Star	2/100000055	Buenos Aires
Pear Computing Services	2/100000056	Atlanta, Georgia
Alpine Systems	2/100000057	Salzburg
New Line Design	2/100000058	Manchester
HEPA Tec	2/100000059	Bremen

However, there is a use for characteristics that often gets overlooked. When using an attribute with characteristics, rather than nesting the characteristics you can use the right click context menu and select Change Caption, this will allow the members to be aliased with the values from one of the characteristics. This works in most drop zone including filters!

